

SITE MANAGEMENT

EQUIPMENT TO KEEP YOUR PROJECT
SAFE, SECURE AND ORGANISED

We offer a comprehensive equipment range of high-quality products and solutions for site set-up and management, keeping your project safe, organised, secure and clean, as it evolves.



WHEEL WASH

A cost-effective wheel-cleaning system for construction sites.

- ✓ Designed using a variety of ribbed sections that ensure the vibration and friction required to remove the maximum amount of mud possible.
- ✓ Removal of mud from vehicle and machinery tyres reduces the amount carried onto public roads.
- ✓ Easy to assemble and transport due to the lightweight frame.



CODE	LENGTH (mm)	WIDTH (mm)	HEIGHT (mm)	WEIGHT (kg)	WLL* (kg)
SS700-00044	19960	3100	1480	5550	44000

*Working Load Limit



BOOT WASH

Stand-alone boot washing station providing an area for site operatives or visitors.

- ✓ Supplied with high quality spray guns and brush for longevity and harsh environments.
- ✓ Prevents mud from entering clean zones, thereby avoiding slip hazards.
- ✓ Two stations can be connected to each other to provide a longer wash station – ideal for larger sites to avoid queues to clean zones during busy periods, reducing downtime.

ITEM	CODE	LENGTH (mm)	WIDTH (mm)	HEIGHT (mm)	WEIGHT (kg)
Single Bay	SS600-00001	660	520	1030	45
Tripple Bay	SS600-00003	1560	520	1030	80

POWERBRUSH FORKLIFT SWEEPER

A hydraulic forklift attachment that cleans and collects dirt and waste.

- ✓ Huge project cost savings compared to road sweeper hire.
- ✓ All weather solution for keeping the mud at bay during the autumn and winter months and suppressing dust in the spring and summer months.
- ✓ Always available on-site, no waiting for unreliable road sweeper appointments, increasing productivity and reducing downtime.

ITEM	CODE	LENGTH (mm)	WIDTH (mm)	HEIGHT (mm)	WEIGHT (kg)	TANK CAPACITY (litres)
Standard Drip Feed	SA800-02100	2180	2340	1260	560	250
Pressurised Water Spray	SA800-02100	2180	2340	1260	560	250
Any + Kerb Brush	SA800-02100	2300	2700	1260	585	250



COSHH STORE

Walk-in storage container designed for secure storage of chemical and other hazardous or flammable substances.

- ✓ Bunded spillage sump protects personnel from spillages and prevents ground contamination.
- ✓ Double doors allow palletised COSHH drums to be placed inside without double handling. Large bund allows for storage of IBCs if required.
- ✓ Best practice option for storage of COSHH materials.

CODE	LENGTH (mm)	WIDTH (mm)	HEIGHT (mm)	WEIGHT (kg)	CAPACITY (litres)	SHELF WLL* (kg)	BUND WLL* (kg)
ST125AF-10000	2438	2200	2260	1350	275	700	1000

*Working Load Limit

COSHH SITE STORAGE BOX

A COSHH compliant storage box for flammable materials and bottles.

- ✓ Safe and secure solution for storing hazardous and flammable substances.
- ✓ Compliant with HSE regulations.
- ✓ Can be fitted with castor wheels to enable it to be moved short distances around site easily. Available in a range of sizes.



ITEM	CODE	LENGTH (mm)	WIDTH (mm)	HEIGHT (mm)	WEIGHT (kg)	WLL* (kg)
COSHH Site Storage Box 572	ST103-00572	1295	630	675	82	Self Weight
COSHH Site Storage Box 1097	ST103-01097	1280	630	1280	153	Self Weight
COSHH Site Storage Box 2904	ST103-02904	2375	985	1230	334	Self Weight
COSHH Site Storage Box 3459	ST103-03459	780	630	675	64	Self Weight

*Working Load Limit



COSHH DRUM STORE

A storage unit for the safe storage of fuel drums.

- ✓ Sump captures spills preventing ground contamination. A removable floor ensures easy cleaning of hazardous spills.
- ✓ Locking devices deter opportunistic thieves, saving on fuel replenishment costs.
- ✓ Available in a range of sizes for different quantities of drums, with gas struts allowing the lid to be opened easily.

ITEM	CODE	LENGTH (mm)	WIDTH (mm)	HEIGHT (mm)	WEIGHT (kg)	CAPACITY (litres)
COSHH Drum Store 1811	ST114-01811	1290	1345	1420	178	295
COSHH Drum Store 2278	ST114-02278	1345	1075	1385	231	485



CRANELIFT COSHH DRUM STORE

A store for the safe storage of COSHH drums that can be crane lifted when full.

- ✓ Secure storage for hazardous substances improving site safety.
- ✓ Unit can be lifted when full, improving productivity, with a capacity for up to 4 x 205 litre drums.
- ✓ Bund captures any spillages, preventing environmental contamination.

CODE	LENGTH (mm)	WIDTH (mm)	HEIGHT (mm)	WEIGHT (kg)	WLL* (kg)	CAPACITY
ST132-04117	1460	1220	2050	440	1000	4 x 205-litre drums

*Working Load Limit

COSHH STORAGE CABINET

A COSHH storage cabinet for storing chemicals or flammable materials and bottles.

- ✓ Sump captures spills preventing ground contamination. Removable grate over the spill containment sump makes removal of spilt liquids quick and safe.
- ✓ Locking devices deter opportunistic thieves, saving on replacement costs.
- ✓ Available in a range of sizes for different site requirements.



ITEM	CODE	LENGTH (mm)	WIDTH (mm)	HEIGHT (mm)	WEIGHT (kg)	FORK POCKET (mm)
COSHH Storage Cabinet 259	ST114AC-00259	505	540	980	45	160 x 65
COSHH Storage Cabinet 585	ST114AC-00585	800	585	1260	74	160 x 65
COSHH Storage Cabinet 1086	ST114AC-01086	1205	585	1560	111	160 x 65



CHAIN STORAGE RACK

An A-frame rack for keeping lifting equipment clean and organised on-site.

- ✓ Keeps chains off the ground, preventing weather deterioration. Supplied with seven overhead hooks as standard, with a lockable toolbox version.
- ✓ Chains and slings are easy to find and organised, rather than tangled together in stillages, reducing downtime.
- ✓ Can be manufactured according to bespoke requirements, such as mesh sides or bars to hold shackles and hooks.

ITEM	CODE	LENGTH (mm)	WIDTH (mm)	HEIGHT (mm)	WEIGHT (kg)	WLL* (kg)
Chain Storage Rack	ST111AG-01000	2000	1148	2350	260	Self Weight
Chain Storage Rack With Toolbox	ST111AH-01000	2000	1148	2350	318	Self Weight

ITEM	CODE	LENGTH (mm)	WIDTH (mm)	HEIGHT (mm)
Toolbox	ST104-00442	1210	620	630

*Working Load Limit

COMPACT CHAIN STORAGE RACK

A space-saving rack for storing chains and other small lifting equipment.

- ✓ Chains and slings are organised and off the ground, reducing downtime and preventing weather deterioration.
- ✓ Single and double row options for varying site requirements.
- ✓ Ideal for sites with limited available space.



ITEM	CODE	LENGTH (mm)	WIDTH (mm)	HEIGHT (mm)	WEIGHT (kg)	WLL* (kg)
Single Row Rack	ST111AT-01000	1820	1025	1900	284	Self Weight
Double Row Rack	ST111AU-01000	1820	1025	1900	310	Self Weight

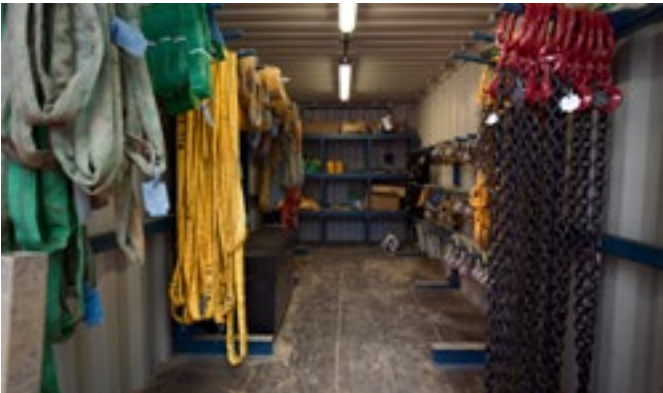
ITEM	CODE	LENGTH (mm)	WIDTH (mm)	HEIGHT (mm)
Toolbox	ST104-00442	1210	620	630

*Working Load Limit

LIFTING EQUIPMENT STORAGE CONTAINER

A container for storing lifting chains and accessories.

- ✓ Available in 10' and 20' sizes to accommodate varying project sizes and site requirements.
- ✓ Can be supplied with or without lighting and electrics.
- ✓ Safe and secure storage prevents loss or theft of equipment and protects it against weather deterioration.



ITEM	CODE	LENGTH (mm)	WIDTH (mm)	HEIGHT (mm)	WEIGHT (kg)
Small	ST136-16000, ST136AA-16000	3000	2240	2600	1695
Large	ST136-33200, ST136AA-33200	6058	2440	2600	2975

FORMWORK RACK

A stillage for safely storing formwork panels and other bulky goods.

- ✓ Manufactured from high-quality steel for a longer lifecycle, saving on replacement costs.
- ✓ Ideal for use in sites constrained by space, plant yards or in a site compound as it is not designed to be transported when full.
- ✓ The rack design ensures the stillage can store formwork panels safely, while providing easy access to panels.



ITEM	CODE	LENGTH (mm)	WIDTH (mm)	BAY WIDTH (mm)	HEIGHT (mm)	WEIGHT (kg)	LIFTING POINTS
Formwork Rack- 15kN	ST127AA-05400	5400	2420	1570	2570	1590	4
Formwork Rack- 8kN	ST127AB-05400	5400	2420	1570	2570	1000	4

SITE STORAGE BOX

A secure storage box for storing tools and equipment on-site.

- ✓ Keeps tools and small equipment secure, preventing theft.
- ✓ Range of sizes to suit varying site requirements.
- ✓ Can be fitted with castor wheels to enable it to be moved short distances around site easily. Available in a range of sizes.



ITEM	CODE	LENGTH (mm)	WIDTH (mm)	HEIGHT (mm)	WEIGHT (kg)
Site Storage Box 523	ST104-00523	1210	625	645	65
Site Storage Box 950	ST104-00950	1220	600	1185	89

POST STILLAGE

A simple framework for efficient storage of materials.

- ✓ A simple framework for efficient storage, it is available in a variety of sizes and suitable for a wide range of materials.
- ✓ Keeps awkwardly-sized loads safely stored and ensures they are easy to access.
- ✓ Standard size fork pockets offer ease of transport around site, as well as on and off delivery vehicles.



ITEM	CODE	LENGTH (mm)	WIDTH (mm)	HEIGHT (mm)	WEIGHT (kg)	WLL* (kg)	CAPACITY (litres)
Post Stillage 600	ST100AC-00600	1000	800	810	32	1500	600
Post Stillage 720	ST100AC-00720	1200	800	810	34	1500	720
Post Stillage 900	ST100AC-00900	1500	800	810	36	1500	900
Post Stillage 1125	ST100AC-01125	1500	1000	810	38	1500	1125

*Working Load Limit

STILLAGE

A frame for storing and organising materials.

- ✓ Stackable design for maximum space utilisation on-site.
- ✓ Available with mesh or solid sides to keep smaller items secure within the frame.
- ✓ Keeps loose materials secure and in one place, preventing replacement costs.



ITEM	CODE	LENGTH (mm)	WIDTH (mm)	HEIGHT (mm)	WEIGHT (kg)	WLL* (kg)	CAPACITY (litres)
Mesh Sides 600	ST101AE-00600	1000	800	810	65	1500	600
Mesh Sides 720	ST101AE-00720	1200	800	810	70	1500	720
Mesh Sides 900	ST101AE-00900	1500	800	810	85	1500	900
Mesh Sides 1125	ST101AE-01125	1500	1000	810	95	1500	1125
Solid Sides 600	ST102AE-00600	1000	800	810	100	1500	600
Solid Sides 720	ST102AE-00720	1200	800	810	110	1500	720
Solid Sides 900	ST102AE-00900	1500	800	810	125	1500	900
Solid Sides 1125	ST102AE-01125	1500	1000	810	140	1500	1125

*Working Load Limit



GAS BOTTLE STORAGE CAGE

An easy to assemble cage ideal for storing LPG, oxygen and acetylene gas bottles on-site.

- ✓ Available in a range of sizes to suit varying site requirements.
- ✓ Suitable for the safe storage of LPG, oxygen and acetylene gas bottles. Conforms to all current legislation.
- ✓ Modular design ensures it is quick and easy to assemble and dismantle. Unit can be stored flat when not in use, saving space on-site or in the yard.

ITEM	CODE	LENGTH (mm)	WIDTH (mm)	HEIGHT (mm)	WEIGHT (kg)
Gas Bottle Storage Cage 4275	ST115-04275	1012	563	931	40
Gas Bottle Storage Cage 1458	ST115-01458	900	900	1800	67
Gas Bottle Storage Cage 2812	ST115-02812	1200	1200	1800	87
Gas Bottle Storage Cage 2916	ST115-02916	1800	900	1800	98
Gas Bottle Storage Cage 3888	ST115-03888	1800	1200	1800	108
Gas Bottle Storage Cage 5832	ST115-05832	1800	1800	1800	135

IBC CONTAINER

IBC tank for transport and storage of bulk liquids.

- ✓ Reinforced base ensures these units can be stacked four-high, saving space on-site, in a yard, or in high bay warehousing.
- ✓ Supplied with a warp-resistant, tubular steel outer frame for protection, reducing the need to replace equipment thereby saving costs.
- ✓ Can be lifted by forklift and transported when full.



CODE	LENGTH (mm)	WIDTH (mm)	HEIGHT (mm)	WEIGHT (kg)	CAPACITY (litres)
FB300-01000	1200	1000	1160	58	1000

IBC STAND

A stand to store IBCs off the ground and safely transport them around site.

- ✓ Enables above ground storage for easier tap access, whilst also providing maximum stability on uneven ground.
- ✓ Provides a safe solution for transporting IBCs with a forklift or telehandler.
- ✓ Dual fork pockets allow for improved forks access.



CODE	LENGTH (mm)	WIDTH (mm)	HEIGHT (mm)	WEIGHT (kg)	WLL* (kg)
ST207	1320	1080	360	80	1100

*Working Load Limit



IBC LIFTING FRAME

A lifting frame for crane lifting Intermediate Bulk Containers (IBC).

- ✓ Stabilising bar can be stowed on the side of the frame during loading and unloading, preventing potential safety hazards or loss charges.
- ✓ The Intermediate Bulk Container (IBC) is safely secured within the frame, greatly improving safety compared to alternative methods, such as slings.
- ✓ Designed for a four-point lift, it can easily facilitate moving water and other liquids around site for use in different locations.

CODE	LENGTH (mm)	WIDTH (mm)	HEIGHT (mm)	WEIGHT (kg)	WLL* (kg)
CA148AA-01000	1470	1270	1550	250	1500



AUTOLOCK TIPPING SKIP

The faster, easier and safer method of transporting waste material.

- ✓ Autolock mechanism eliminates the need to attach safety restraint chains around the machine's carriage, reducing downtime and improving productivity.
- ✓ No levers or cables are required to discharge the skip, so the driver can remain safely seated within the machine's cab.
- ✓ Design reduces the impact the skip receives from the back of the forks, increasing its longevity and reducing repair or replacement costs.

ITEM	CODE	LENGTH (mm)	WIDTH (mm)	HEIGHT (mm)	WLL* (kg)	WEIGHT (kg)	CAPACITY (litres)
Standard	FA800-00500	1400	920	934	1000	125	500
Standard with Castors	FA801-00500	1400	989	1023	1000	160	500
Cranelift	CA128-00500	1400	920	1050	1000	130	500
Cranelift with Castors	CA134-00500	1400	989	1138	1000	165	500
Standard	FA800-01200	1818	1224	964	2000	150	1200
Standard with Castors	FA801-01200	1818	1224	1051	2000	185	1200
Cranelift	CA128-01200	1818	1224	1078	1000	155	1200
Cranelift with Castors	CA134-01200	1818	1224	1160	1000	190	1200

*Working Load Limit



FUEL BOWSER

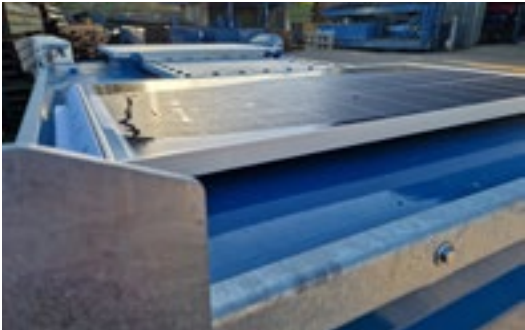
A fully-bunded, durable fuel tank for storage of diesel and other fuels.

- ✓ Pump options available: bowzers fitted with a hand pump as standard or a range of electric pump options are available on request.
- ✓ Crane lifting points and four-way fork pockets for ease of transportation around site, or on and off a delivery vehicle.
- ✓ The 880 litre bowser can be transported with fuel while remaining ADR compliant. The 2000 litre bowser cannot be transported full. All units can be stacked two-high when full and three-high when empty.



ITEM	CODE	LENGTH (mm)	WIDTH (mm)	HEIGHT (mm)	WEIGHT ¹ (kg)	WEIGHT ² (kg)	CAPACITY (litres)
Small Fuel Bowser 880	FB602-00950	1320	1150	1150	370	1270	880
Large Fuel Bowser 2000	FB602-02000	1350	1150	2300	700	2500	2000

1 Weight when unit empty
2 Weight when unit full



SMART FUEL TANK

A stand-alone, transportable fuel storage unit for refuelling plant and vehicles.

- ✓ Electric pump with app login preventing unauthorised use and reducing fuel theft.
- ✓ Fuel usage can be monitored by site, vehicle or plant, and individual user, all on an easy-to-use online portal.
- ✓ Solar-powered unit not reliant on mains supply, improving a project’s sustainability.

CODE	LENGTH (mm)	WIDTH (mm)	HEIGHT (mm)	WEIGHT (kg)	CAPACITY (litres)
FB630-3000	2273	1523	1323	1130	3000

FUEL ECO-HUB

A stand-alone, central hub for fuel management on-site.

- ✓ Fuel is locked away in a secure, weatherproof container, preventing theft.
- ✓ App login required to operate pump, preventing unauthorised use.
- ✓ Online portal stores all usage data, providing real-time fuel monitoring.
- ✓ Solar panels ensure the unit is not reliant on an electric supply.
- ✓ Range of optional extras to suit varying site requirements.

CODE	LENGTH (mm)	WIDTH (mm)	HEIGHT (mm)	WEIGHT (kg)	FUEL TANK CAPACITY (litres)
ST140AC-16000	2940	2570	2830	2400*	2000**

*Combined weight of container and empty fuel tank. Subject to change depending on your configuration.
**3000-litre fuel tank available upon request.



ROAD PLATES

Steel plates designed as a safe temporary pathway across uneven, sunken or broken ground.

- ✓ Available in four variations – Standard, Anti-Skid, Centre-Lift and Anti-Skid Centre-Lift.
- ✓ Standard steel plates available in small and large sizes, compliant with Street & Roadworks Code of Safe Practice.
- ✓ Improves access for vehicles and machinery and prevents damage to them, saving on repair or replacement costs.

ITEM	CODE	LENGTH (mm)	WIDTH (mm)	THICKNESS* (mm/inches)	WEIGHT (kg)
Standard Road Plate 1200	SS520-01440	1200	1200	19.77 / 3/4	226
Standard Road Plate 2400	SS520-02880	2400	1200	19.77 / 3/4	452
Anti-Skid Road Plate	SS520AB-02880	2400	1200	19.77 / 3/4	452
Centre-Lift Road Plate	SS520AC-02880	2400	1200	19.77 / 3/4	452
Anti-Skid Centre-Lift Road Plate	SS520AD-02880	2400	1200	19.77 / 3/4	452

*Manufacturing tolerances mean the width and length could vary by 10mm +/- and the thickness by 2mm +/-

MANHOLE COVER PLATE

A steel plate designed as a safe temporary cover across manholes or sunken or uneven ground.

- ✓ Compliant with Street & Roadworks Code of Safe Practice.
- ✓ Range of sizes available to suit varying site requirements.
- ✓ Available with chamfered edges for specific applications. Anti-slip coating available.



ITEM	CODE	LENGTH (mm)	WIDTH (mm)	THICKNESS (mm)	WEIGHT (kg)
Manhole Cover Plate 600	SS506-00360	600	600	6	17
Manhole Cover Plate 1000	SS506-01000	1000	1000	6	51



SAFETY BRIEFING STATION

A multi-functional unit for site personnel.

- ✓ Provides a central hub for site operatives, improving personnel welfare.
- ✓ Designated area for team briefings, important site notifications and first aid support.
- ✓ Complete with built-in cabinets for first aid kits, fire extinguisher bins, sign-in area for personnel and magnetic, fold-out whiteboards for daily staff briefings.

CODE	LENGTH (mm)	WIDTH (mm)	HEIGHT (mm)	WEIGHT (kg)	WLL* (kg)
SS905-17389	2760	2610	2840	2170	Self Weight

*Working Load Limit



SITE TRAFFIC PODIUM

An easy access podium for on-site vehicle sign-in.

- ✓ Truck drivers can sign in and out of site without having to leave the cab, reducing downtime.
- ✓ Prevents build-up of site traffic, improving logistical efficiency.
- ✓ The frame is simple to assemble and can be broken down for transport.

CODE	LENGTH (mm)	WIDTH (mm)	HEIGHT (mm)	WEIGHT (kg)	WLL* (kg)	CAPACITY (persons)
SS605	2780	2000	4080	700	240	2

*Working Load Limit

SMOKING SHELTER

A shelter to provide an outdoor, designated, safe environment for site worker to smoke.

- ✓ The sides are at least 50% open to comply with regulations.
- ✓ Providing a designated area increases safety and the welfare and care of employees.
- ✓ The solid steel floor prevents precipitation ingress and ensures the shelter can be placed on most surfaces.



CODE	LENGTH (mm)	WIDTH (mm)	HEIGHT (mm)	WEIGHT (kg)
SS901AC-07200	1510	2020	2410	380

SAFETY STATION

A multi-purpose, central hub for all site operatives.

- ✓ Complete with a whiteboard and a pin board for daily staff briefings and site information.
- ✓ A range of optional extras available, including first aid kits, lighting, spill kit, fire extinguisher bins and defibrillator storage.
- ✓ Fold-down shelf.
- ✓ Lifting points and fork pockets for easy manoeuvre around site.

CODE	LENGTH (mm)	WIDTH (mm)	HEIGHT (mm)	WEIGHT (kg)
SS905-07200	2020	1510	2410	460



GET IN TOUCH

Call: 0333 300 3470

Email: sales@cqegroup.com

Visit: www.cqegroup.com



Copyright © 2025 Conquip Engineering Group. All Rights Reserved.

